

Wind farm holds AGM

WEATHER guru Rob Gell provided a keynote presentation that paid tribute to the trail-blazing community of Hepburn Wind as members celebrated the construction of Australia's first community-owned wind farm at their AGM last Wednesday night.

His presentation highlighted the importance of pioneering projects like Hepburn Wind to lead Australia in the take-up of renewable energy.

Almost 200 members attended the AGM to play an active part in the running of their wind farm.

Before settling into the evening's business, two buses took the members to Leonards Hill to view their achievement up close and learn about the technology from Hepburn Wind chairman Simon Holmes a Court.

With a term sheet signed only five minutes prior to the AGM, director Daniel Magasanik



Rob Gell

revealed that Hepburn Wind had chosen an energy retailing partner, RedEnergy, an Australian-owned energy company selling the community's clean energy when it begins generating in the coming months. Members also elected three new directors for their cooperative.

The final components of turbines were lifted into position on Sunday, making the Hepburn community wind farm Victoria's ninth and smallest wind farm and the first to be owned by

a community.

The overwhelming community support came in stark contrast to many of the messages coming to light as part of the Senate inquiry into the social and economic impact of wind farms.

In order to build the \$13 million project, the 1600 members of the wind farm co-operative collectively invested \$8.7m – a clear indication of enormous local support for renewable energy, according to Hepburn Wind.

Members of Hepburn Wind shared their story with the Senate Community Affairs Committee last Monday and Mr Holmes a Court presented the senators with a list of the 1100 positive submissions made by supporters of the project.

He said the project was firmly committed to sharing the benefits with the entire community by establishing a community sustainability fund.

Afternoon of great blues



MUSIC

with **DARREN LOWE**

CASTLEMAINE State Festival, Lot 19, Saturday, April, 10, 3pm.

AS part of the Castlemaine State festival this Saturday, Lot 19 presents an afternoon of roots and blues music, with a pretty strong line-up.

Described as a cross between Monslavat and Mad Max, Lot 19 may be Castlemaine's worst-kept secret.

Headlining will be guitar virtuoso Jeff Lang, Sime Nugent's new project the Wilson Pickers, Jo Jo Smith, Abbie Cardwell, Sweet Jean, Claire Jenkins avec band and Heel Toe Express.

Of course, singer/songwriter/guitarist Jeff Lang is world-renowned as an excellent guitarist who is equally at home with folk, rock, blues, experimental and World music styles.

He has released 10 solo albums, a number of collaborations, including a personal favourite with the late Chris Whitley, and toured with the greats including Eric Clapton, Bob Dylan (roll on April 21) and Jeff Beck.

Sime is well known to



Jeff Lang

Daylesford/Hepburn residents for his work with The Forefathers and his very intimate solo gigs. The Wilson Pickers are essentially an acoustic band playing "banjo, fiddle, harmonica and acoustic guitar-based songs that draw on bluegrass, folk, country and lots of other things."

The band is made up of Victorian's Sime Nugent on harmonica/vocals and John Bedgood (fiddle/mandolin/vocals), and Queensland's Danny Widdicombe (guitar/vocals), Ben Salter (banjo/vocals), and Andrew Morris (guitar/vocals).

The day kicks off at 3pm.

EARLY Sessions with Robbie Nevill, Horvat's WINE Bar, Saturday, April 9, followed by Lee Rosser, 8.30pm till late. Free entry.

ROBBIE Melville has performed with a variety of Melbourne bands including The Tramways Big Band, Crèche, and his own

contemporary jazz project Cleverhorse, which has released a long-overdue debut album *Goodnight, Mr Monster*.

He has played with James Morrison, Marina Prior, Roy Best and Guy Sebastian.

In 2008 Robbie launched an album called *Softly, Softly* showcasing a repertoire of original solo pieces incorporating a variety of styles such as jazz, country and ambient music.

Robbie has played in various clubs throughout the US, Japan, South Korea, China and performs regularly around Melbourne, including being the in-house guitarist and musical arranger at Red Room Recording Studio.

NEIL Murray, The Old Hepburn Hotel, Sunday, April 11.

LAKE Bolac's most famous export (that I'm aware of, anyway), Neil Murray, returns to perform in our town.

Of course, he was originally a member of Northern Territory '80s outfit, The Warumpi Band and did pen a pretty successful tune in *My Island Home*.

Neil still lives in the Lake Bolac/Ballarat area and spends extended periods in the Northern Territory in their dry season, maintaining strong links with contacts and friends made during his time with The Warumpi Band.

Neil will perform material from his extensive catalogue, including his 10th and latest studio album *Witness*. This time around, Neil will perform acoustically and solo.



5348 1122

25 Vincent Street, Daylesford 3460 VIC

FAX (03) 5348 1000 OPEN 7 DAYS A WEEK

DRE - Locally Owned, Staffed and Operated

YOUR LOCAL AGENTS

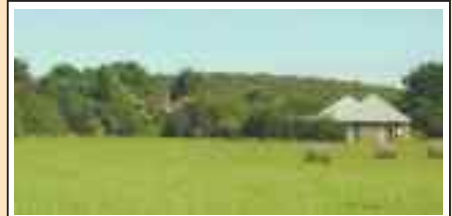
Counsel in Real Estate Sales, Acquisitions, Investment and Marketing. Member R.E.I.V



HEPBURN
Spacious high set 2br b/v home in old Hepburn set on approximately 750m of land. Mature gardens with fruit trees & a lovely front verandah that enjoys views over to the hills. Bright & spacious home boasts a large lounge room with gas heating, roomy kitchen with walk in pantry and adjoining dining room. Each bedroom has a BIR & the rear bedroom features a powder room that leads to the bathroom that is semi ensuited. Good rear carport come entertainment area and a small storage room plus lots of extra storage cupboards and spaces. This property provides ample opportunity for those wishing to add their personal touch. **\$305,000**



YANDOIT
Yandoit, aprx 15 mins from Daylesford. Well situated in the heart of historic Yandoit & with three street frontages is this great 3.8 acre block with the perfect ratio of cleared land and trees. Located on the corner of High Street, Recreation Street and Park Avenue at Yandoit & close to the school. With a nice hill that enjoys lovely views of the area, this block is an interesting and engaging place. A great opportunity to purchase not only a good sized block of land but one with a planning permit! Don't delay act today! A great farming zoned (FZ) block with a planning permit at this price is very desirable. **\$127,000**



DAYLESFORD
Auction Sat May 7, 2011
Muskvale. Situated on the Ballan Road is this wonderfully level 10 acre corner block with 2 dwellings. There is a brick home as well as a hidden weatherboard home. Preliminary notice. More details and inspection dates to follow. **AUCTION**



HEPBURN SPRINGS
"Tiffany's Lodge & Bonnie Brae Cottage" Grand Edwardian 3BR home & 1BR cottage all set on a 1034m2 block. "Tiffany's Lodge" Grand lounge dining room with fireplace, period features & high ceiling. Master bedroom has an ensuite while main bathroom has a luxurious spa. Kitchen and meals area leads to a deck which enjoys views over the surrounding forest. "Bonnie Brae Cottage" Freestanding 1BR cottage neatly tucked away offering its own peace and seclusion. Lounge, bedroom, kitchen and meals area as well as a bathroom with spa. Presently let on the holiday rental market "Tiffany's Lodge & Bonnie Brae Cottage" would make a great family home or continue to rent on the Daylesford holiday market. **\$525,000**



PEMBERLEY COTTAGE
"Pemberley Cottage" A well situated, elegant 3BR home on a good sized corner block. Classic features such as central hall, polished boards, high ceilings and slate roof set the tone for this fine Federation style home. You will love the big rooms, master bedroom with ensuite, main bathroom with big corner spa. The open plan living area is an entertainers delight, spacious with bell ceilings wood fire and a fantastic, well appointed kitchen with stainless steel appliances. Outside you have a low maintenance garden and big, big workshop/shed/boys play room. A grand family home, weekend getaway or continue on the holiday rental market. **\$545,000**



HEPBURN
Lots 1 and 2, 232 Main Rd aprx 800m2 each, RES1 zoned land in popular Hepburn with all services available. Nice outlook. Fabulous location close to the primary school, golf course and spa. Each has an approved council planning permit. **\$127,000 EACH**

Christine Segart Sales
0427 496 553



Paul Green
Property Management



Paul Johnston Auctioneer
0419 582 035



www.daylesfordrealestate.com.au No. 1 On The Web — Reaching More Local, Melbourne, Interstate & International Customers!